

附件 C

2025“中国轻纺城·东进杯”第十七届

中国高校纺织品设计大赛

户外休闲与工装服装设计组面料备选样本

- 1、各个面料均为扫描样本，颜色上与实际可能有些差异，请以每个图上方表格中的颜色为准。
- 2、在初赛设计稿件中请将选择的面料的 DT 编号、颜色以及面料样本的截图（100×100 像素）等显示在设计稿中。
- 3、每个作品最多提供 3 种规格面料，且每种不超过 5 米，请合理设计。

序号	面料编号	颜色	库存数	克重	特点	弹力	用途
1	DT-2368-RECYCLE	PP016能量紫	65Y	155	单布，再生尼龙登山尼	有弹力	登山服、冲锋衣、卫衣、登山裤、工装裤
2	DT-NYLON-409-RT	PP015科技蓝	71Y	185	单布，70D尼龙登山尼	有弹力	登山服、冲锋衣、卫衣、登山裤、工装裤
3	DT-925-TPE	308裸粉	153Y	125	2L，250T春亚纺单贴膜	无弹	冲锋衣、工装服、户外休闲运动服装
4	DT-925-CL	704海军蓝	180Y	125	2L，高强春亚纺单贴膜（布边有点发黄）	无弹	冲锋衣、工装服、户外休闲运动服装
5	DT-3075-TPU	AG3408葡叶绿	155Y	133	2L，75D半光平纹T800单贴膜	微弹	冲锋衣、工装服、户外休闲运动服装
6	DT-2263-RECYCLE	PP199天蓝90025	210M	97	2L，环保密绒平纹单贴膜	无弹	冲锋衣、工装服、户外休闲运动服装
7	DT-NYLON-275A-RECYCLE	1073松绿C0	88M	230-240	单布，环保70D尼龙登山呢	微弹	登山服、冲锋衣、卫衣、登山裤、工装裤
8	DT-NYLON-275A	黑色	200M	230-240	单布，70D尼龙登山呢	微弹	登山服、冲锋衣、卫衣、登山裤、工装裤
9	DT-2604	PP016仙人掌绿/PP016仙人掌绿	95Y	231	3层轻克重Softshell，100D平纹四面弹+PU膜+20D双面布	微微弹	软壳冲锋衣、运动及休闲夹克、运动服
10	DT-2096-B-N66	PP026香葱绿	226Y	62	单布，尼龙弹力纬弹防绒	纬弹	羽绒服、棉服、皮肤衣，轻薄外套
11	DTP10170-D001	PP141大红色	214M	78	单布，80D亮光尼龙小牛津布	无弹	羽绒服、棉服、外套、包包
12	DT-2156	PP184橘红	85Y	156	单布，75D加密环保四面弹	微弹	运动休闲T恤、短裤、轻薄外套裤子
13	DT-2317	KK0191风驰灰C0	148Y	122	2L，40D尼龙弹力布平纹单贴膜	微弹	冲锋衣、工装服、户外休闲运动服装
14	DT-2256-RECYCLE	1467蛙绿50063	151M	112	2L，环保60D涤纶全消光高弹丝单贴膜	微弹	冲锋衣、工装服、户外休闲运动服装
15	DT-2198-B	PP141 布丁色	51M	115	2L，消光斜竖条四面弹单贴膜	微弹	冲锋衣、工装服、户外休闲运动服装
16	DT-NYLON-243Q	PP282 B0092锌钡白	80Y	240	单布，70D登山尼	有弹力	登山服、冲锋衣、卫衣、登山裤、工装裤
17	DT-3777	A02437丹林橙	80Y	109	2L，50D棉感纬高弹单贴膜	微弹	冲锋衣、工装服、户外休闲运动服装
18	DT-2078-R	658胡桃色/990新黑色	77Y	255	3L，棉感弹力经编布+膜+50D/72，32G环保单面针织布	有弹力	冲锋衣、滑雪服、登山服、户外服装
19	DT-NYLON-425-R	PP287深棕色	70M	220	单布，70D尼龙格子登山呢	有弹力	登山服、冲锋衣、卫衣、登山裤、工装裤
20	DT-2271	PP195 浅橄榄	91M	153	单布，70D尼龙ATY经弹	经弹	运动休闲T恤、短裤、轻薄外套裤子

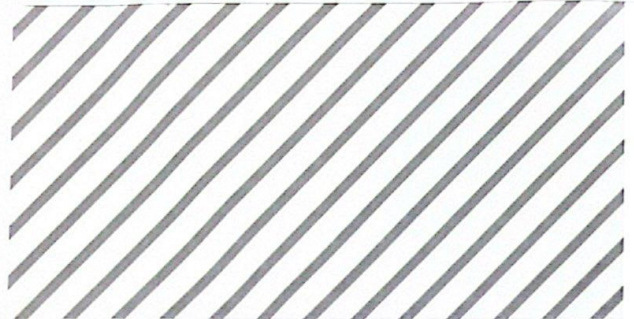
DRY-TEX

COMFORT, PERFORMANCE & INNOVATION

WWW.DRY-TEX.COM

email: sales@dry-tex.com

DT CODE: DT-2368-RECYCLE
DESCRIPTION: RR RECYCLE Nylon Double weave
CONSTRUCTION: 70/24f(RE) + 40d + 70d/24f(RE) + 40d/140d/96f(RE)
COMPOSITION: 88%PA 12%EL
WEIGHT(GSM): 155gsm
WIDTH(INCH): 57
WP(JIS): /
MVTR(JIS B1): /
NOTES: 88%Recycle PA 12%EL



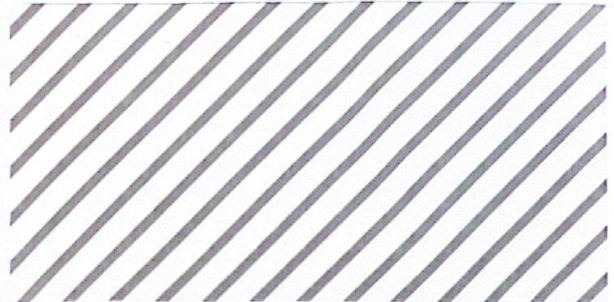
DRY-TEX

COMFORT, PERFORMANCE & INNOVATION

WWW.DRY-TEX.COM

email: sales@dry-tex.com

DT CODE: DT-NYLON-409-RT
DESCRIPTION: 70D Nylon Double Weave
CONSTRUCTION: 70d + 40d + (70d + 40d) + 140d
COMPOSITION: 89%PA 11%EL
WEIGHT(GSM): 185GSM
WIDTH(INCH): 55
WP(JIS): /
MVTR(JIS B1): /
NOTES: 89%RECYCLE PA 11%EL

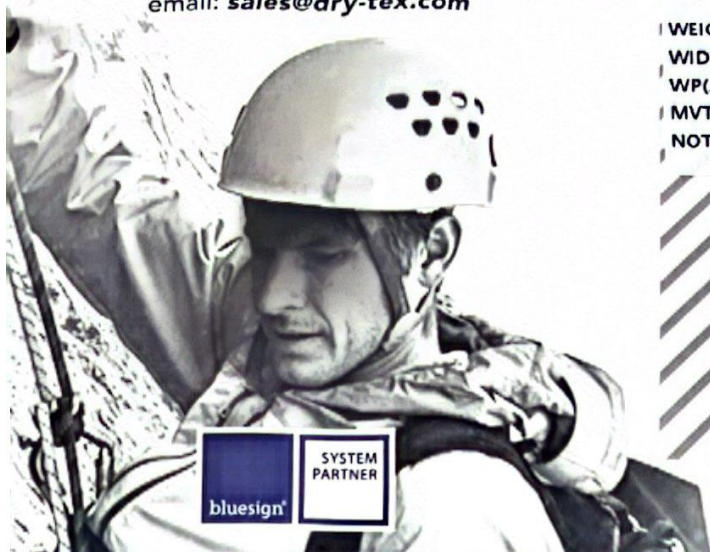


DRY-TEX

COMFORT, PERFORMANCE & INNOVATION

WWW.DRY-TEX.COM

email: sales@dry-tex.com



DT CODE: DT-925-TPE

DESCRIPTION: Mono Component Poly 2layer ski

CONSTRUCTION: Face

COMPOSITION: Face 100%p

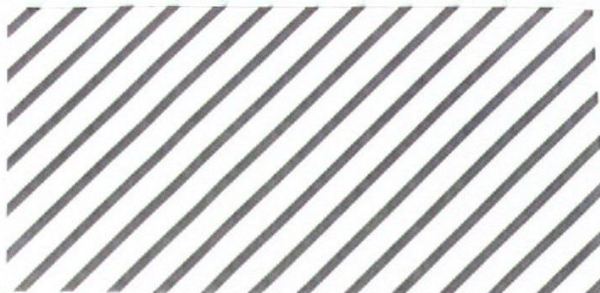
WEIGHT(GSM): 125gsm

WIDTH(INCH): 57"

WP(JIS): 8000

MVTR(JIS B1): 5000

NOTES: Mono Component



308 親粉

DRY-TEX

COMFORT, PERFORMANCE & INNOVATION

WWW.DRY-TEX.COM

email: sales@dry-tex.com

DT CODE: DT-925-CL

DESCRIPTION: 2layer ski

CONSTRUCTION: Face:75d,75d,2401

COMPOSITION: Face:100%P

WEIGHT(GSM): 125GSM

WIDTH(INCH): 57"

WP(JIS): 8000

MVTR(JIS B1): 8000

NOTES:



DRY-TEX

COMFORT, PERFORMANCE & INNOVATION

WWW.DRY-TEX.COM

email: sales@dry-tex.com

DT CODE: DT-3075-TPU

DESCRIPTION: 2layer ski

CONSTRUCTION: Face 75D/72F*75D/48F

COMPOSITION: Face 100%ELE

WEIGHT(GSM): 133GSM

WIDTH(INCH): 57

WP(JIS): 10000

MVTR(JIS B1): 10000

NOTES:



DRY-TEX

COMFORT, PERFORMANCE & INNOVATION

WWW.DRY-TEX.COM

email: sales@dry-tex.com

DT CODE: DT-2263-RECYCLE

DESCRIPTION: micro touch 2layer

CONSTRUCTION: Face 50D/144F SD DTY X50D/144F SD DTY

COMPOSITION: Face 100% PES

WEIGHT(GSM): 97GSM

WIDTH(INCH): 57"

WP(JIS): 10000

MVTR(JIS B1): 10000

NOTES: Face 100% RECYCLE PES



DRY-TEX

COMFORT, PERFORMANCE & INNOVATION

WWW.DRY-TEX.COM

email: sales@dry-tex.com

DT CODE: DT-NYLON-275A-RECYCLE
DESCRIPTION: Recycle Nylon Double Weaving
CONSTRUCTION: 70D • 40D • 70D • 40D/280D
COMPOSITION: 92%PA 8%EL
WEIGHT(GSM): 230-240gsm
WIDTH(INCH): 57/58
WP(JIS):
MVTR(JIS B1):
NOTES: 92%RECYCLE PA 8%EL



DRY-TEX

COMFORT, PERFORMANCE & INNOVATION

WWW.DRY-TEX.COM

email: sales@dry-tex.com

DT CODE: DT-NYLON-275A

DESCRIPTION: Nylon Double Weaving

CONSTRUCTION: 70D + 40D + 70D + 40D/280D

COMPOSITION: 92%PA 8%EL

WEIGHT(GSM): 230 240gsm

WIDTH(INCH): 57/58

WP(JIS):

MVTR(JIS B1):

NOTES: can be recycle



DRY-TEX

COMFORT, PERFORMANCE & INNOVATION

WWW.DRY-TEX.COM

email: sales@dry-tex.com

DT CODE: DT-2604

DESCRIPTION: 100D 4W Stretch Light Softshell

CONSTRUCTION: Face 100D + 40D + 100D + 40D Back 20D + 20D

COMPOSITION: Face 94%P 6%SPX Back 100%P

WEIGHT(GSM): 231GSM

WIDTH(INCH): 58"

WP(JIS): 10000

MVTR(JIS B1): 10000

NOTES:



DRY-TEX

COMFORT, PERFORMANCE & INNOVATION

WWW.DRY-TEX.COM

email: sales@dry-tex.com

DT CODE: DT-2096-B-N66

DESCRIPTION: Nylon W Stretchy Downproof

CONSTRUCTION: N6 20D/24F FDY x N66 20D/20 + 20D-FDY(SD)

COMPOSITION: 87%NY 13%SPx

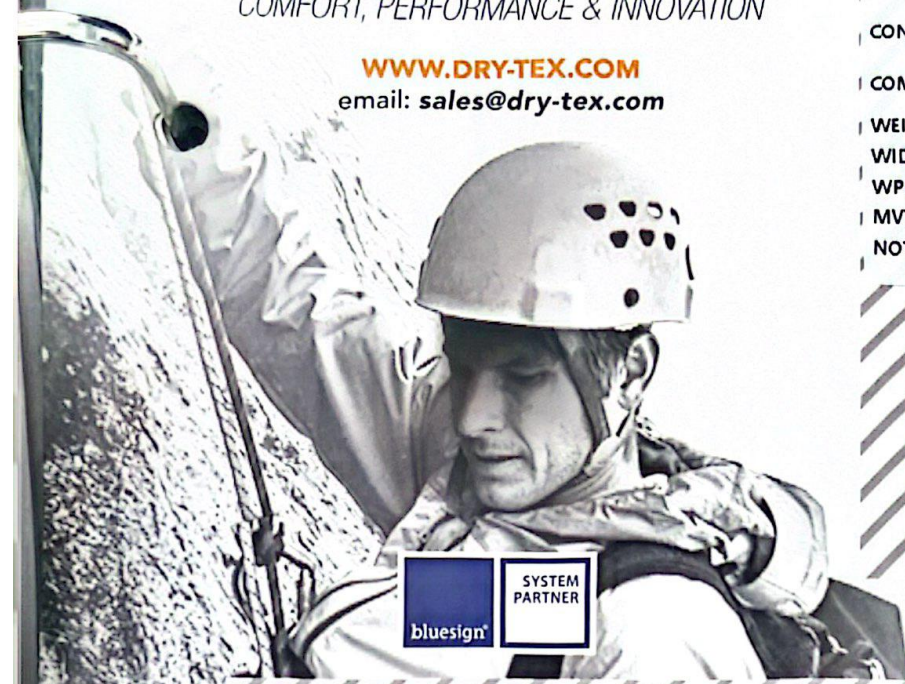
WEIGHT(GSM): 62gsm

WIDTH(INCH): 57"

WP(JIS): /

MVTR(JIS B1): /

NOTES:



DRY-TEX

COMFORT, PERFORMANCE & INNOVATION

WWW.DRY-TEX.COM

email: sales@dry-tex.com

DT CODE: DTP10170-D001

DESCRIPTION: 80D Bright Nylon Oxford

CONSTRUCTION: 80D*80D

COMPOSITION: 100%PA

WEIGHT(GSM): 78gsm

WIDTH(INCH): 57"

WP(JIS):

MVTR(JIS B1):

NOTES:

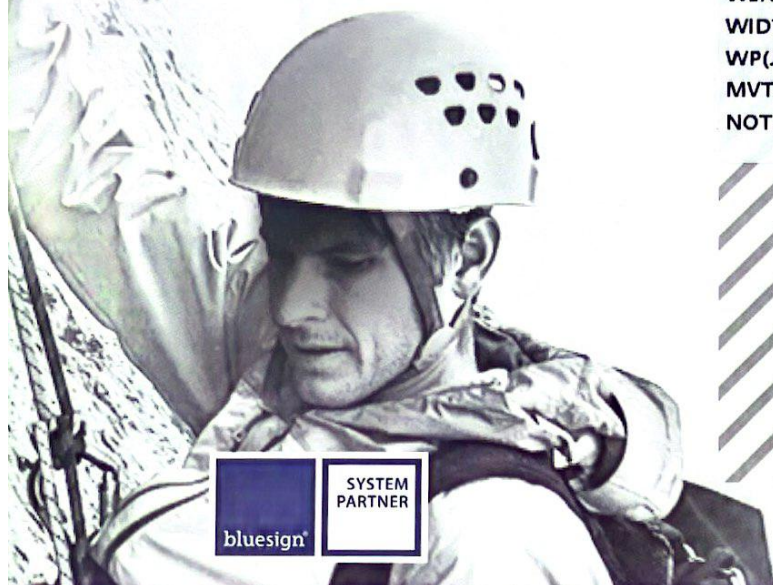


DRY-TEX

COMFORT, PERFORMANCE & INNOVATION

WWW.DRY-TEX.COM

email: sales@dry-tex.com



DT CODE: DT-2156

DESCRIPTION: 75D recycle 4W Stretch

CONSTRUCTION: 75D + 40D + 75D + 40D

COMPOSITION: 88%PES 12%EL

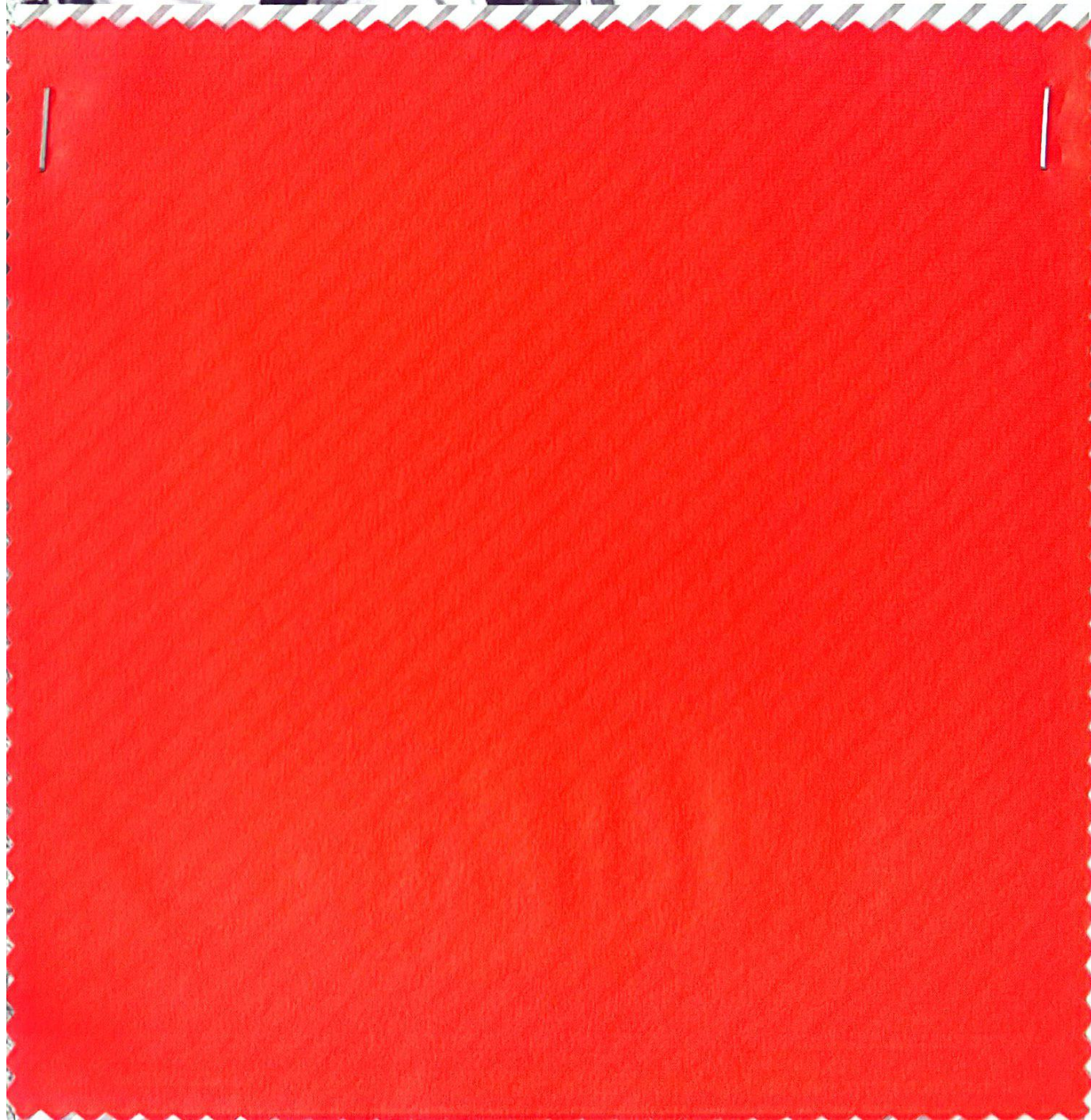
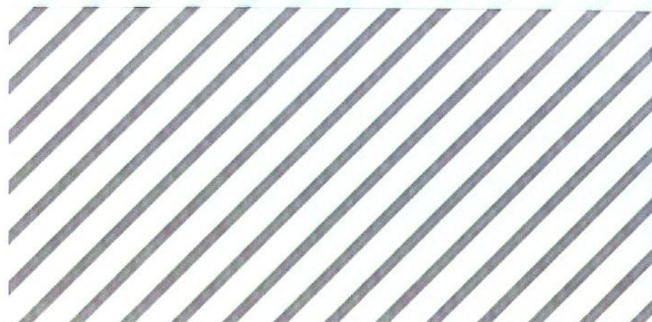
WEIGHT(GSM): 156gsm

WIDTH(INCH): 57/58"

WP(JIS): /

MVTR(JIS B1): /

NOTES: 88%RECYCLE PES 12%EL



DRY-TEX

COMFORT, PERFORMANCE & INNOVATION

WWW.DRY-TEX.COM

email: sales@dry-tex.com

DT CODE: DT-2317

DESCRIPTION: Nylon Stretchy 2 Layer

CONSTRUCTION: Face N40d/34f SD DTY + 20DSP X N40d/34f SD DTY + 20DSP

COMPOSITION: Face 86%NY 14%SPX

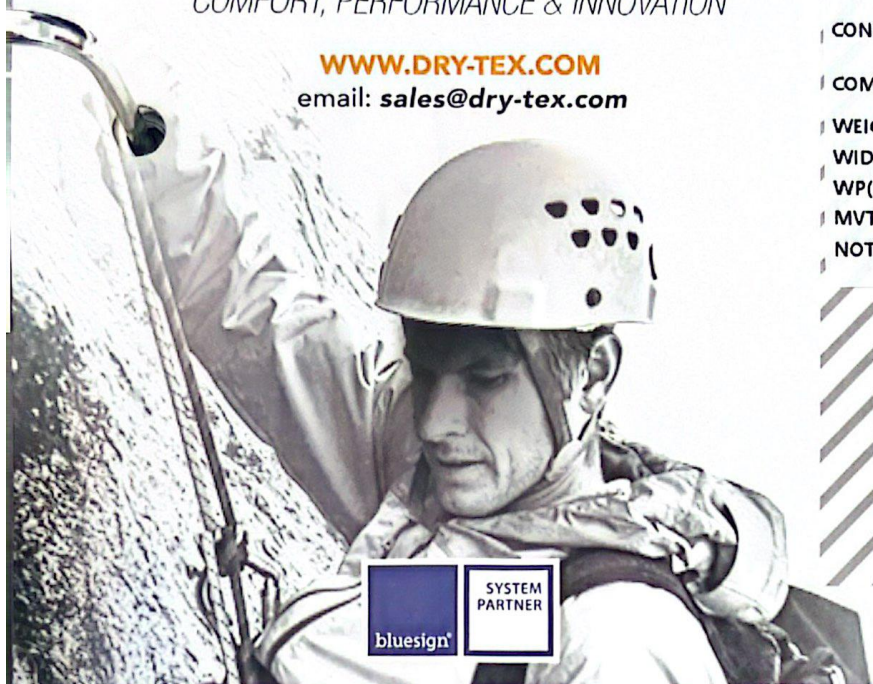
WEIGHT(GSM): 122gsm

WIDTH(INCH): 55"

WP(JIS): 10000

MVTR(JIS B1): 10000

NOTES:



DRY-TEX

COMFORT, PERFORMANCE & INNOVATION

WWW.DRY-TEX.COM

email: sales@dry-tex.com

DT CODE: DT-2256-RECYCLE

DESCRIPTION: PT 2LAYER

CONSTRUCTION: Face 60d x 60d

COMPOSITION: Face 100% PES

WEIGHT (GSM): 112 GSM

WIDTH (INCH): 57"

WP (JIS): 10000

MVTR (JIS B1): 10000

NOTES: yes, recycle
Face: 100% RECYCLE PES



DRY-TEX

COMFORT, PERFORMANCE & INNOVATION

WWW.DRY-TEX.COM

email: sales@dry-tex.com

DT CODE: DT-2198-B

DESCRIPTION: Twill Stripe 2 layer ski

CONSTRUCTION: Face 30D + 20D + 30D + 20D

COMPOSITION: Face 84%N; 16%SPX

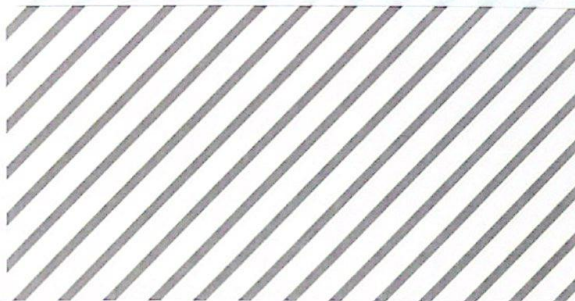
WEIGHT(GSM): 115GSM

WIDTH(INCH): 53"

WP(JIS): 10000

MVTR(JIS B1): 10000

NOTES:



DRY-TEX

COMFORT, PERFORMANCE & INNOVATION

WWW.DRY-TEX.COM

email: sales@dry-tex.com

DT CODE: DT-NYLON-243Q

DESCRIPTION: 70D nylon double weave

CONSTRUCTION: 70D + 40D + 70D + 40D + 320D

COMPOSITION: 93%N 7%SPX

WEIGHT(GSM): 240GSM

WIDTH(INCH): 54

WP(JIS): /

MVTR(JIS B1): /

NOTES:



DRY-TEX

COMFORT, PERFORMANCE & INNOVATION

WWW.DRY-TEX.COM

email: sales@dry-tex.com

DT CODE: DT-3777

DESCRIPTION: 50D Cotton Touch Weft Stretchy Woven
2layer ski

CONSTRUCTION: Face: 50D/48F*50D/34F

COMPOSITION: Face: 100%ELE

WEIGHT(GSM): 109GSM

WIDTH(INCH): 51"

WP(JIS):

MVTR(JIS B1):

NOTES:



DRY-TEX

COMFORT, PERFORMANCE & INNOVATION

WWW.DRY-TEX.COM

email: sales@dry-tex.com

DT CODE: DT-2078-R

DESCRIPTION: Warpknit Hardshell

CONSTRUCTION: FACE 40D + 40D, 40G, BACK P50/48, 28G/34"

COMPOSITION: FACE: 76%PA 24%EL; BACK: 100% PES

WEIGHT(GSM): 255GSM

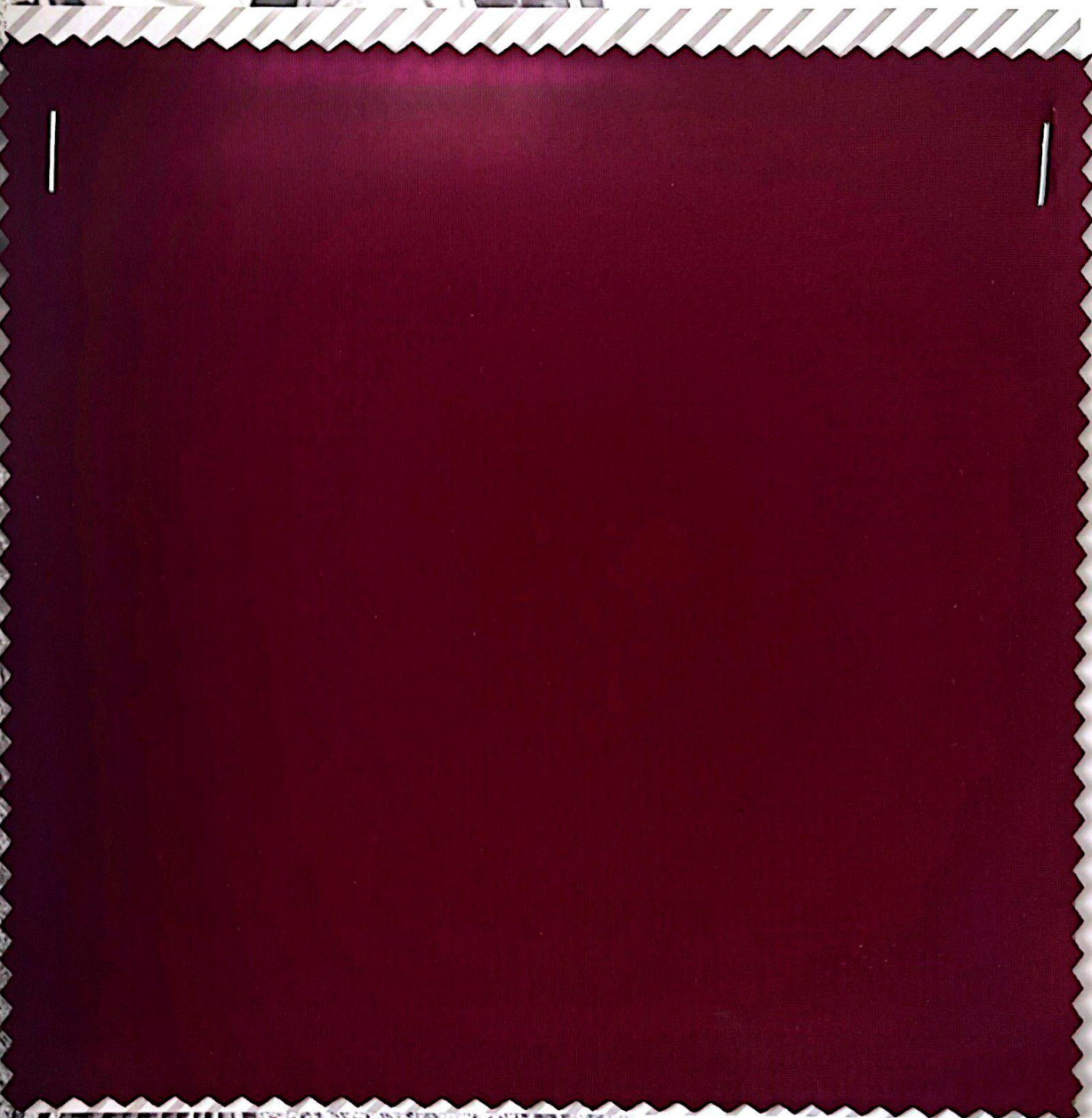
WIDTH(INCH): 57"

WP(JIS):

MVTR(JIS B1):

NOTES:

FACE 76%PA 24%EL, BACK 100% PELYLLLE PE



DRY-TEX

COMFORT, PERFORMANCE & INNOVATION

WWW.DRY-TEX.COM

email: sales@dry-tex.com

DT CODE: DT-NYLON-425-R

DESCRIPTION: Nylon Double Weaving

CONSTRUCTION: 70D + 40D + 70D + 40D/210D/140D + 40D

COMPOSITION: 92%PA 8%EL

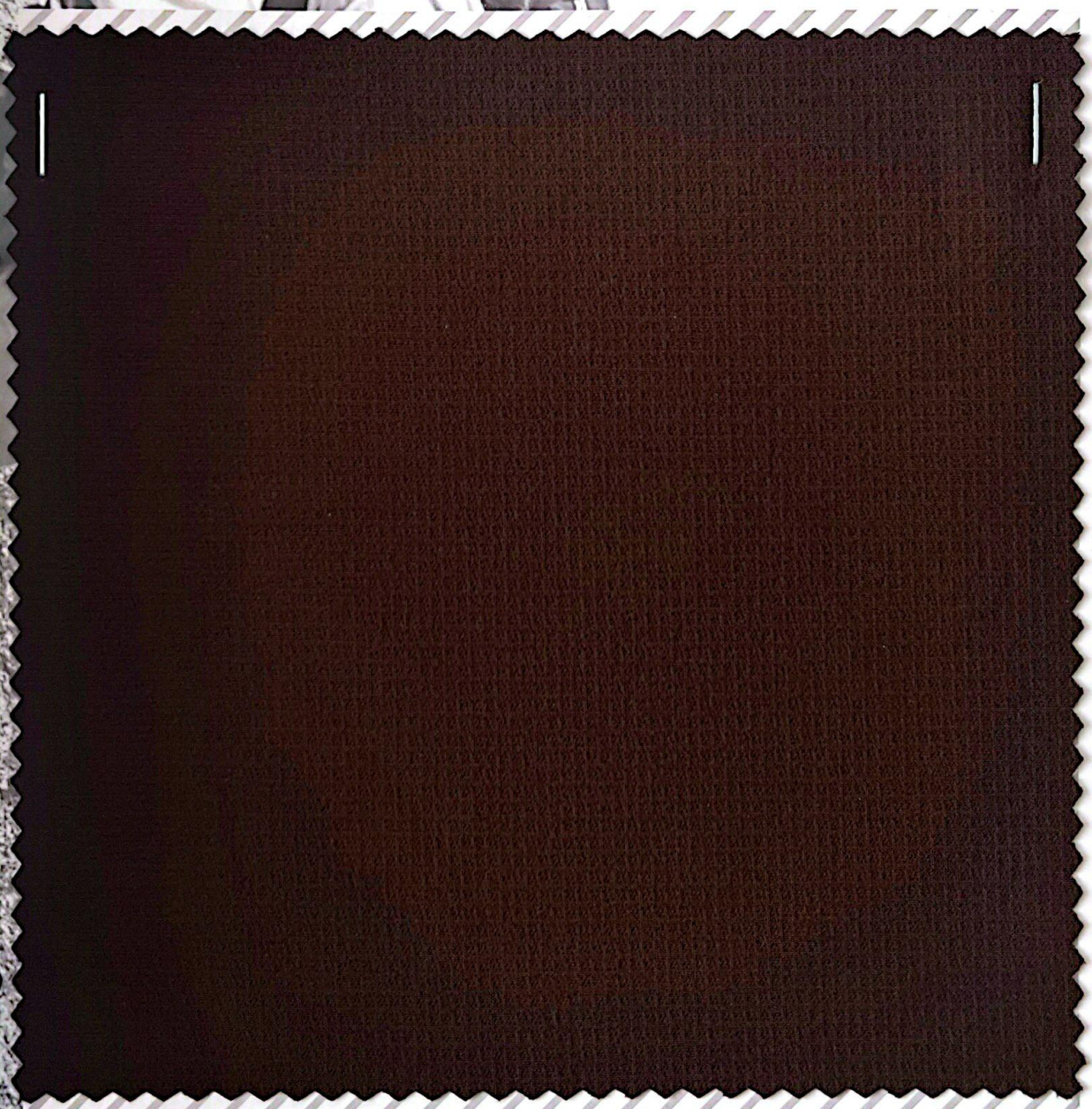
WEIGHT(GSM): 220gsm

WIDTH(INCH): 57"

WP(JIS):

MVTR(JIS B1):

NOTES: 92%Recycle PA 8%EL



DRY-TEX

COMFORT, PERFORMANCE & INNOVATION

WWW.DRY-TEX.COM

email: sales@dry-tex.com

DT CODE: DT-2271

DESCRIPTION: Nylon Cotton Touch Warp Stretchy Woven

CONSTRUCTION: FD N70/48 • 40DSP • FD N160D/136F ATY

COMPOSITION: 95%N 5%SP

WEIGHT(GSM): 153gsm

WIDTH(INCH): 55"

WP(JIS): \

MVTR(JIS B1): \

NOTES:

